



ST. LUKES MISSION HOSPITAL

NEWSLETTER

Inside this issue:

Clinicians
treat elephant
victim

.....
Hospital
donor
committee

.....
Water tower
project

.....
Latrine
project

.....
Electrification
project

.....
Maternal
health
situation

.....
Contact us



Writers:

Mr. Victor Mnelemba

Mr. Steve Macheso

Dr. Eva Stortelder

P.O. Box 21
Chilema, Zomba
MALAWI

stlukeshospitalmalosa@gmail.com

JANUARY—JUNE, 2013

HOSPITAL BACKGROUND INFORMATION

St. Luke's Hospital and Nursing school
Malosa, Chilema

St. Luke's Mission Hospital opened its doors in 1964, and is located in the Area of Traditional Authority Malemia in Zomba district just a few metres from the Zomba-Liwonde tar mark road about 25 kilometres from Zomba and 23 kilometres from Liwonde township.



St. Luke's Mission Hospital has 5 health centres and acts as a referral hospital for Zomba and Machinga district. It's regarded as the district hospital for Zomba since this district has only its Central Hospital.

St. Luke's Hospital has a total bed capacity of 145 and serves over 30,000 catchment population and 90,000 referral population.

Despite being the mission hospital which requires one to pay a little something to be treated, over 50% of the people within the catchment population live below the poverty line which is less than \$ 1.25 per day. Over 80% of them depend on small scale farming for their daily living.

St. Luke's Hospital offers a variety of outpatient and inpatient services.

The inpatient unit has four wards; Male Ward, Female Ward, Pediatric Ward and Maternity. There is also an operating theatre which mainly handles caesarian sections and other types of surgical procedures.

The outpatient unit has a number consultation rooms and attends to minor disease ailments and conditions. The maternal & child health (MCH) department is also located in the same section and offers services as family planning, 'under five clinic' and ante-natal clinic.

The hospital's 5 rural health centers are spread over 3 districts: 'Chilipa' and

'Nkasala', located in Zomba District, 'Gawanani' and 'Mposa' located in Machinga District and 'Matope' in Neno district.

Being a Christian establishment whose aim is to continue the healing ministry of Jesus Christ, services at the hospital and its rural health centers are offered purely on a non-profit making basis. This has been very challenging as the hospital often faces significant financial constraints, leading to shortages of drugs and medical supplies.

Over the years the hospital has relied heavily on external donors mainly from the United Kingdom and the Netherlands, to sustain its services.

DONOR COMMITTEE

The general management of St. Luke's Hospital has instituted a 'Donor Committee' to be in charge of all donor relationships. This committee aims to establish growth of the hospital and improvement of its circumstances. The committee comprise of dedicated workers with expertise in donor relationship and skills of report writing.

MEET THE MEMBERS:

Dr. Eva Stortelder

She is a medical doctor from the Netherlands, 29 years old and specialised in tropical medicine. She has joined the hospital as a United Nations Volunteer doctor in 2012.

Since her joining the hospital, Dr. Eva has instituted a number of projects. She aims to create a positive working spirit in the day-to-day care for patients.

Mr. Victor Mnelemba

Victor is a public health worker by profession and has skills of project Management and resource mobilisation including Monitoring and Evaluation.

Victor is 27, and is working with the Anglican Diocese of Upper Shire the proprietors of the Hospital as the Diocesan Health officer.

Victor likes working with marginalised community members.



Left to right: Victor Mnelemba (Diocesan Health Coordinator), Eva Stortelder (Senior Medical Officer), Rachael Kaulembe (Senior Accounts Assistant), Gertrude Kumpolota (Senior Administrative Officer).

Mrs. Gertrude Kumpolota

Gertrude is another hard working and dedicated member of the Donor Committee.

She has recently joined the hospital and works as a Senior Administrative Officer.

Before coming to St. Luke's, she worked in several hospitals and has experience in health management. She's delighted to work here, as she was born and has grown up around this area. To work in the hospital in which she was born, is something special to her.

Mr. Steve Macheso

Steve is the matron or Principal Medical Officer. He has been working with St. Luke's for several years now, and has just finished one year of masters study in the USA. We are glad to have him back in the St. Luke's team again!

Mrs. Rachael Kaulembe

Rachael has joined the organization in 2012 as senior assistant accountant. She is an enthusiastic member of staff with more than 6 years experience with donor funding projects in admin and finance. Also, she has experience with the private sector, whereby she maintained good relationships with the stakeholders. She is proud to be part of St. Luke's Donor Committee, and to share her existing skills and experience, as well as learning new ones.

ST. LUKES TREATS ELEPHANT VICTIM

People around the hospital lived in fear on the morning of Wednesday the 5th of June, 2013, after the news that an elephant had escaped from Liwonde National Park, about 23 kilometres further north, that was terrorising the area.

This was just like a rumour until when people witnessed the first victim being brought to St. Luke's hospital with lots of blood.

Esnart Richard, aged 29 from Machinga district, met her fate when she was in the field doing her usual job (farming). She saw the elephant appearing to her. At first she thought it was a 'moving house' that was approaching her. Then she understood it was the elephant. Narrated Esnart to Dr. Eva on the day of her discharge after staying in the hospital for ten days.

The animal knocked her over to the ground and rolled her between the forelegs. Then it stabbed her with his tusk through the abdomen and ran away, leaving her to die.

Esnart is married and has four children with the youngest being 10 months old, whom she was carrying on her back during the time of her fate. She praises St. Luke's hospital for the quality and effective management of her case. Without that she could be died by now, she said.



The victim (right) with her guardian at St. Luke's hospital



Work done! The team and the victim one week later.

St. Luke's would like to thank for the immediate helping hands of dr. Frans Zoetmulder, surgeon from Zomba.

The elephant was killed three days later in Nasawa area about 30 kilometres from Malosa. By the time it was killed, the elephant had already injured 14 people and killed 3. Among them was

the Game ranger that tried to eliminate the animal, who died on his way to St. Luke's Hospital.

People of Malosa and nearest areas shall live to remember this day and people were all intact in their house in fear of this elephant after witnessing the injuries of Esnart and the death of the Game ranger.

MEN AT WORK, THE WATER TOWER PROJECT

The new song is being sang at St. Luke's hospital thanks to Rotary Vlaardingen in the Netherlands, who funded the construction of the water tower with a 2,000 litres capacity water tank, to build up pressure for their washing machine.

Before the project, St. Luke's hospital which uses water from the Malosa Mountain, had challenges of water at the hospital due to low pressures of water as it flows towards the hospital. The washing machine, a great gift from Rotary Vlaardingen as well, could not run.

Water is the basic need for each and every hospital for multiple use and to avoid infections. But St. Luke's hospital could not get its big washing machine going till the project came in to rescue the burden.

On the pictures:

men from the Maintenance department of the hospital are busy working on the project, which is now finished.

However these hard working men in these pictures lack a place to be called an office.

Despite their dedicated work, Maintenance department only has a small room and neither a proper workplace, nor suitable tools and equipment.

We at St. Luke's Hospital have a need to construct a good office with tools for these hardworking men, but we lack support from a well wisher to help us realize this dream.



MATERNAL AND CHILD HEALTH SITUATION

Malawi is one of the developing nations that joined the rest of the world in working towards the achievement of the Millennium Development Goals MDG's. For this to happen, the government of Malawi depends on partners and stakeholders who work hand in hand with them in achieving these goals.

St. Luke's Hospital is such a government partner in fulfilling the Millennium Development Goals. There are a number of goals where the hospital is applying its efforts, but one of them is the goal number five which reads "**improve maternal health**".

St. Luke's Hospital is much aware of this goal and it is really striving to implementing the government efforts. This can be proved by the strong partnership and Service Level Agreement (SLA) that the hospital and the government of Malawi signed to treat pregnant women for free despite being a mission hospital.

However, the efforts in achieving these MDG's is facing a lot of stumbling blocks and as of St. Luke's we are doing all what we can do to achieve our goal.

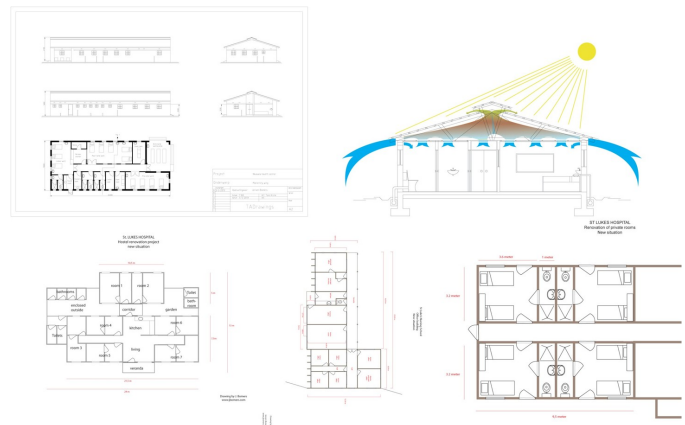
Pregnant women deserve the best place for them to have a safe delivery and be motivated to have health facility deliveries. St. Luke's Hospital's maternity ward however, should undergo a small renovation so that it could be up to date and motivate the clients and portray the good image that suit the service offered.

The maternity ward is also in a great need of a mobile ultrasound machine in the delivery ward which could help in decision making during patients' labour, and prevent unnecessary Caesarean sections.

St. Luke's hospital currently delivers 5-10 women in a day which translates to over 150 births per month. Out of these deliveries 15 are through Caesarean section.



A pregnant woman being prepared for a 'Caesar'



Plans for a.o. a new maternity wing at Nkasala Health Centre, which is funded by the 'Malawian Association for Christian Support' (UK).

ELECTRICITY FROM SUN THE ONLY HOPE



St. Luke's Hospital as a referral hospital also has 5 rural mission health centres under its care. Due to the geographical positions of the areas and being the remotest part of the country, the electricity network supplied by the government electricity body is not available for all of them, and solar electricity is the only hope for people.

Out of the 5 rural health centres only 2 are connected to electricity network and the remaining 3 rural health centres depend on the electricity from the sun.

As we are striving hard to provide the good working condition and good working environment for our workers and also providing the quality service to our clients, some of these rural health centres were fixed with the said solar power electricity.

Before this development it was hard to provide quality service just imagine the situation where by a pregnant woman needs to deliver and there is no electricity and its night.

As of now we are yet to source funds for the electrification project in 1 remaining health centre. Thanks to all our partners who help us now and again.

THANK YOU! ZIKOMO!
DANKJULLIEWEL!

The Donor Committee of St. Luke's Hospital wish to thank all donors of the hospital for their continued support towards the development and daily running of the hospital.

We want to assure you that your support being financial, material and moral goes a long way to reach the needy Malawians.

As a hospital we'd like to let you know that we don't take that for granted and we shall make sure that we provide you with the much needed timely and useful feedback for all your donations you make to this hospital.

St. Luke's Mission Hospital is continuing the ministry of Jesus Christ of healing people. By supporting us you are also taking you part in uplifting this healing ministry.

The picture shows some of your support towards the hospital, the washing machine inside and the water tank far right, both funded by Rotary Vlaardingen in the Netherlands.



The precious gift of life

Gift of life is a precious gift which God gave us all at free of charge. However, due to unforeseen circumstances we need to provide hope to other people who feel they are losing the precious gift.

Chronically ill patients, under five children, the elderly pregnant women and accident victims at times need blood donation, which St. Luke's Hospital does.

There are also other people of good will who help the hospital to have in stock this important liquid substance called blood which is mostly needed at crucial times of ones life.

However despite the availability of patients who need blood and donors who donate blood, the hospital is in a great need of a new Blood Bank Fridge, to store blood for patients.

St. Luke's Hospital used to have one blood bank fridge but currently it is not working and the cost of repairing it seems to be of higher side than sourcing another one due to the nature of damage and the spares needed.



A child in search of life, he needs blood



People of good will donate blood to St. Luke's Hospital

THEATRE TO WEAR NEW FACE



Theatre maintenance has been started, thanks to 2 student doctors from Amsterdam university; Ms. Judith Horenblas and Ms. Jony van Hilst.

In future we need to extend to 2 theatre rooms to be better prepared for emergencies.

PIT LATRINE PROJECT



Construction work in progress of new pit latrines at one of the 5 rural health centres to improve on infection prevention and hygiene.



Over 50% of the hospital clients are poor and live below the poverty line; they live on less than \$1.25 per day.

St. Luke's Hospital is a big hospital with about 145 bed capacity with four main wards. However the hospital is asking well wishers to help with hospital mattress and linen.

The hospital is currently using old mattresses and linen, which is also not good for the patient's health.

Thank You !
Dankjulliewel
Zikomo!

TO SUPPORT US WRITE TO stlukeshospitalmalosa@gmail.com or visit www.stlukes.nl